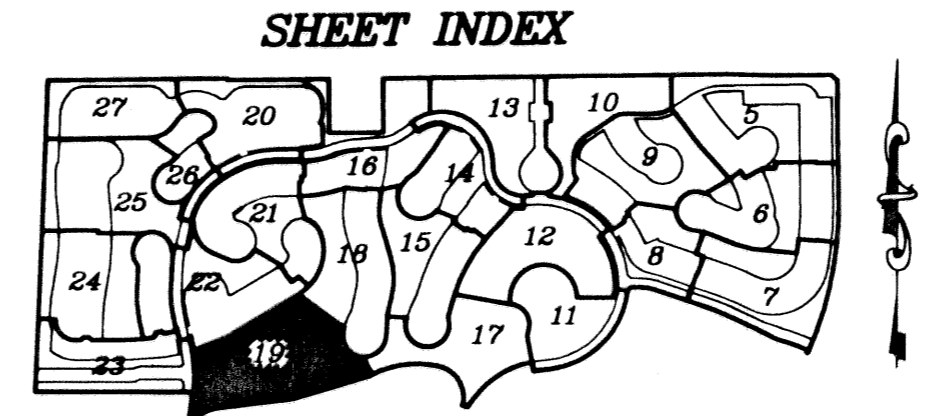
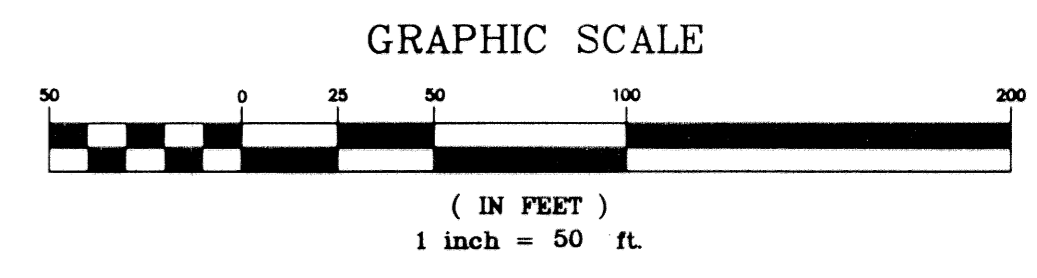
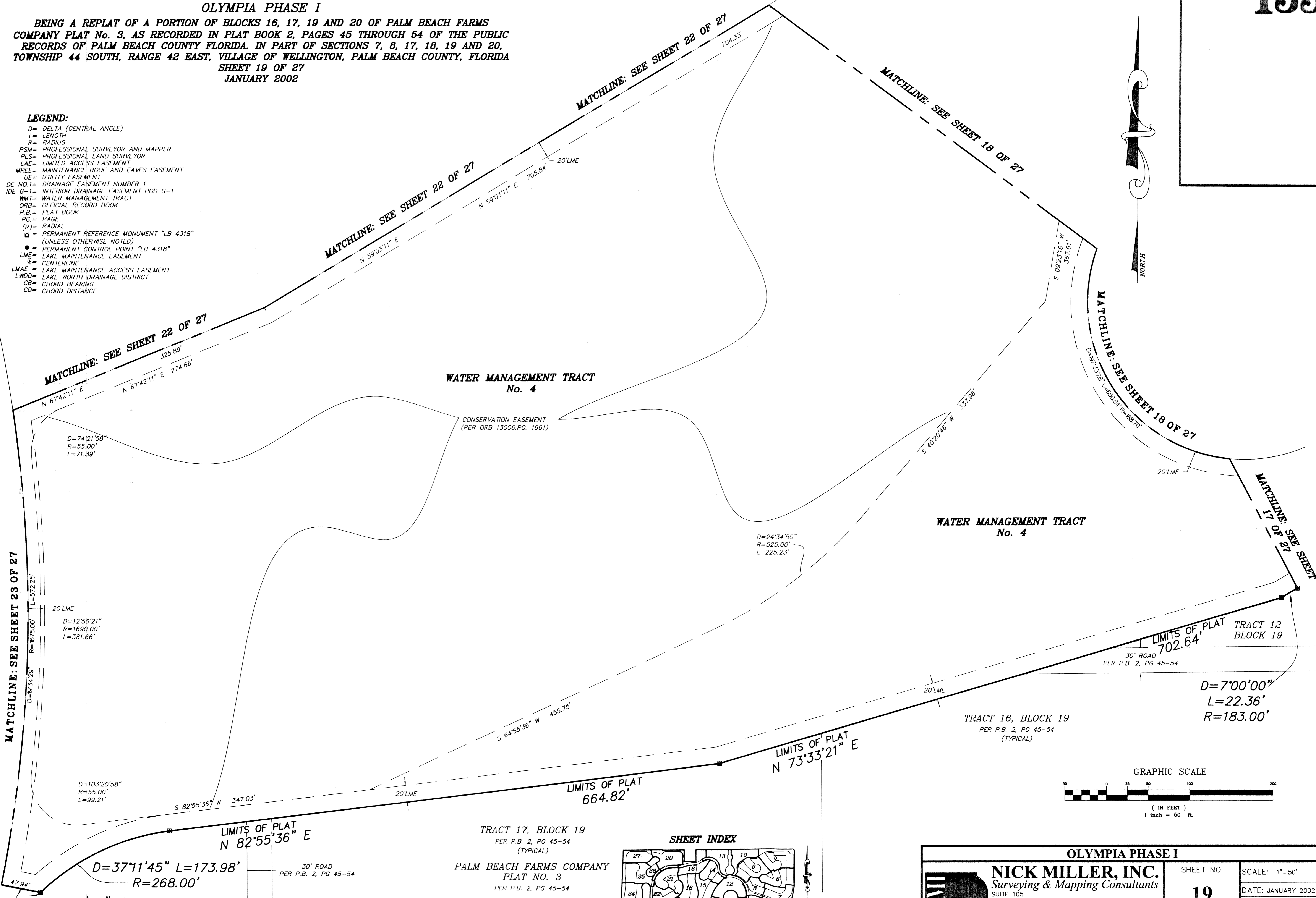
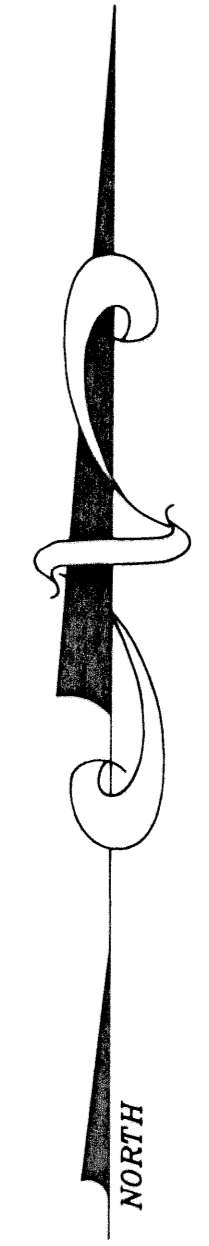


OLYMPIA PHASE I

BEING A REPLAT OF A PORTION OF BLOCKS 16, 17, 19 AND 20 OF PALM BEACH FARMS COMPANY PLAT No. 3, AS RECORDED IN PLAT BOOK 2, PAGES 45 THROUGH 54 OF THE PUBLIC RECORDS OF PALM BEACH COUNTY FLORIDA. IN PART OF SECTIONS 7, 8, 17, 18, 19 AND 20, TOWNSHIP 44 SOUTH, RANGE 42 EAST, VILLAGE OF WELLINGTON, PALM BEACH COUNTY, FLORIDA SHEET 19 OF 27 JANUARY 2002

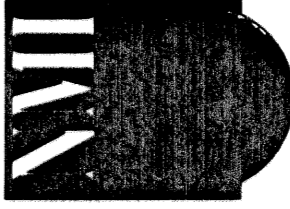
LEGEND:

- D= DELTA (CENTRAL ANGLE)
- L= LENGTH
- R= RADIUS
- PSM= PROFESSIONAL SURVEYOR AND MAPPER
- PLS= PROFESSIONAL LAND SURVEYOR
- LAE= LIMITED ACCESS EASEMENT
- MREE= MAINTENANCE ROOF AND EAVES EASEMENT
- UE= UTILITY EASEMENT
- DE NO. 1= DRAINAGE EASEMENT NUMBER 1
- IDE G-1= INTERIOR DRAINAGE EASEMENT POD G-1
- WMT= WATER MANAGEMENT TRACT
- ORB= OFFICIAL RECORD BOOK
- P.B.= PLAT BOOK
- PG.= PAGE
- (R)= RADIAL
- = PERMANENT REFERENCE MONUMENT "LB 4318" (UNLESS OTHERWISE NOTED)
- = PERMANENT CONTROL POINT "LB 4318" (UNLESS OTHERWISE NOTED)
- LME= LAKE MAINTENANCE EASEMENT
- C= CENTERLINE
- LMAE= LAKE MAINTENANCE ACCESS EASEMENT
- LWDD= LAKE WORTH DRAINAGE DISTRICT
- CB= CHORD BEARING
- CD= CHORD DISTANCE



TRACT 17, BLOCK 19
 PER P.B. 2, PG 45-54
 (TYPICAL)

PALM BEACH FARMS COMPANY
 PLAT NO. 3
 PER P.B. 2, PG 45-54

 <p>NICK MILLER, INC. Surveying & Mapping Consultants SUITE 105 2560 RCA BLVD. PALM BEACH GARDENS, FLORIDA 33410 TEL 561 627-5200 FAX 561 627-0983 D.B.P.R. LICENSED BUSINESS No. 4318</p>	OLYMPIA PHASE I	
	SHEET NO.	SCALE: 1"=50'
	19	DATE: JANUARY 2002
		JOB NO. 1008.01
	FILE: 1008.01	